



INSPIRIT

SENIOR LIVING



CLICK
TO START
NAVIGATION



MEDIA KIT

Inspirit Senior Living is proud to deliver exceptional senior care to our residents, top-notch customer service to their families, and a meaningful, supportive work environment to our team members.

[ABOUT
INSPIRIT](#)[INSPIRIT
LEADERSHIP](#)[INSPIRIT BY
THE NUMBERS](#)[INSPIRIT
COMMUNITIES](#)

> MISSION

Inspirit Senior Living is dedicated to honoring the whole person—body, mind, and spirit. Our team of skilled and dedicated professionals treats every resident as an individual. We create communities that foster health and well-being—and provide experiences that draw out everyone’s gifts.

Our communities reflect the decades of experience that Inspirit brings to the vocation of caring for seniors. Inspirit communities focus on the complete resident experience. Our commitment to our residents’ physical well-being is reflected in the quality of our skilled care-givers, the excellent food, beautiful surroundings, and comfortable furnishings. Recreational and educational activities—music, reading groups, bridge clubs, lectures, films, and countless other opportunities—keep the Inspirit community intellectually stimulated and socially engaged. Inspirit properties are also important and respected members of our local communities. Local schools, voluntary organizations, choirs, and even trained therapy dogs—all are frequent visitors for celebrations or just to say hello.

> HISTORY

Inspirit’s vocation is to transform the experience of aging in this country.

Inspirit is the realization of a long-held dream. Founded in 2015, Inspirit is led by CEO David McHarg, one of the most respected leaders in the field of senior care. Dave served in top executive roles with some of the nation’s best providers for more than 25 years. His experience inspired a vision — of a nationwide family of properties, all dedicated to the highest standards of care and to a set of common values. Dave’s reputation enabled him to assemble a visionary team of senior executives and investors who share the vision. Together, the Inspirit team is pursuing a nationwide expansion to fulfill its ambition — nothing less than to transform the experience of aging in this country.

CONTACT

David McHarg –CEO
Sam Zarrabinia –CFO
Jonathan Barbieri – COO

Inspirit Senior Living
8000 Westpark Drive Suite 650
McLean, VA 20024
(703) 815-5800



> SIGNATURE PROGRAMS



Care Your Way is a quality first care first approach to providing exceptional care. Every Resident is provided a detailed care assessment conducted by a healthcare expert which provides a real-time evaluation of exactly what is needed today, while preparing for tomorrow.



Life Your Way is a signature approach to active adult living that focuses on socialization, security, and independence. Through Life Your Way, seniors are empowered to enjoy their retirement to the fullest, with everyday needs including cooking, cleaning, and home maintenance completely taken care of by a team of energetic, dedicated staff.



May their memories be blessed.

AN INSPIRIT SIGNATURE PROGRAM

Sage is a program to aid people with Alzheimer's and other forms of dementia. Sage is committed to improving the quality of life for all of our residents. While other dementia programs overlook the emotional needs of the resident, choosing to concentrate on the physical side of the illness, we believe that the whole person must be considered and treated with respect and consideration.



Taste of Inspirit is Inspirit's signature approach to dining which includes customizable daily and weekly menus based on resident feedback and recipe contributions, a specially crafted Inspirit signature spice blend for a flavorful, low-sodium diet, and local, farm to table certified produce and dairy vendors to ensure fresh, quality ingredients.



Pure Health, by Inspirit is a new level of cleaning to proactively protect our communities— with strength and comfort. To achieve this, Inspirit partners with Viking Pure Solutions, an innovative company leading the charge in sustainable cleaning and disinfecting technology.

The Inspirit management team members have a history over the past 30 years of working closely and successfully to rejuvenate and build exceptional Senior Living Communities.

[ABOUT
INSPIRIT](#)
[INSPIRIT
LEADERSHIP](#)
[INSPIRIT BY
THE NUMBERS](#)
[INSPIRIT
COMMUNITIES](#)

> OUR APPROACH

Inspirit takes special pride in its warm and personal approach to management, both with respect to its employees as well as its residents. Inspirit derives significant benefits from the teams incredible breadth of experience, systems, and turnaround support. Below is a description of the key personnel who operate Inspirit and its key affiliates. As a company in a state of stable growth, Inspirit Management knows the value of hiring and retaining quality personnel. Inspirit Management employs top professionals within the fields of management, marketing, finance, clinical expertise, and administration. Below is a summary of key management.

> MANAGEMENT TEAM



DAVID K. McHARG

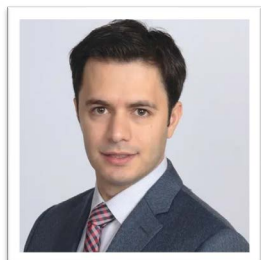
President and Chief Executive Officer

Dave McHarg founded Inspirit to fulfill an ambitious vision: the transformation of the experience of aging in this country. Dave's deeply held belief is that every human being has dreams to pursue— and gifts to share—at every stage of life. The Inspirit family of properties directly reflects Dave's commitment to a senior care experience that infuses new energy, vigor, and sense of purpose into its residents' lives.

Dave's vision has been honed through almost 30 years of experience as a senior executive with regional and national senior living companies. Prior to founding Inspirit, Dave held progressively responsible leadership positions at Greenfield Senior Living, a regional provider headquartered in Falls Church, (VA), ultimately serving as Greenfield's president and chief operating officer. Under Dave's leadership, Greenfield grew from two local facilities to more than 20 facilities serving more than 1,300 residents in six states (VA, MD, PA, NJ, TN, and TX).

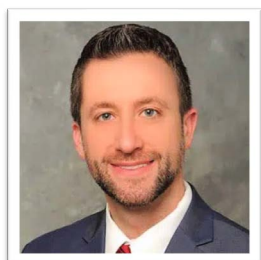
As Greenfield grew, so did Dave's reputation for transforming underperforming facilities into thriving communities.

MANAGEMENT TEAM



SAM ZARRABINIA Chief Financial Officer

Sam Zarrabinia is Inspirit's leader on all matters related to financial strategy. He is responsible for structuring acquisition transactions, crafting tax strategy, mitigating risk, and creating financial projections and reports. He also supports CEO Dave McHarg in managing relationships with Inspirit's investors. Sam's professional experience for more than a decade has focused on providing the best innovative solutions. Prior to joining Inspirit, he worked in a series of progressively responsible management positions for Snyder Cohn, one of the Washington, DC area's leading certified public accountancy and financial advisory firms. At Snyder Cohn, Sam worked with businesses in the hospitality, health care and real estate industries. He advised his clients in various areas of tax law, and provided expert consultation on mergers and acquisitions, interest transfers, and financial reporting.



JONATHAN BARBIERI Chief Operating Officer

Jonathan Barbieri serves as Inspirit's Senior Vice President & Chief Operating Officer; a strategic partner who provides organizational leadership over Inspirit's existing and growing portfolio in the areas of operations, revenue, development, programs, and services. Jonathan is an inspirational leader who is driven by his passion to serve and to create exceptional healthcare and lifestyle solutions. Jonathan is a nationally recognized healthcare leader whose success can be attributed to his unwavering belief in the potential for betterment in every person. Jonathan has over a decade of experience in operations, clinical practice, sales & marketing, finance, investor relations, training, and development. Prior to joining Inspirit Jonathan served as The Hearth Management's Senior Vice President responsible for organizational oversight, global strategy, and leadership over the mid-Atlantic, northeast, and Midwest. Prior to joining The Hearth Management, Jonathan's experience includes Chief Marketing Officer for Greenfield Senior Living, Vice President of Resident Care for Sunrise Senior Living, and States Director of Caregiver Homes. Jonathan began his career in healthcare as a staff RN in the ICU serving severely compromised individuals. It is from this early experience that Jonathan envisioned the great potential in people and services that can create betterment for all, regardless of circumstance.

ABOUT
INSPIRIT

INSPIRIT
LEADERSHIP

INSPIRIT BY
THE NUMBERS

INSPIRIT
COMMUNITIES



BY THE NUMBERS

Inspirit Senior Living continues to have strong performance year after year. Below are some highlights of significant growth in both revenue and resident capacity, along with a steady increase in staffing. The overall message emphasizes resilience, effective management, and continued expansion during a period of change and opportunity.

> COMMUNITY MANAGEMENT



\$45.57M

Annual Net
Operating Income

> STRONG GROWTH

30%

Proven ability
to grow
census up to
30% over 12
months



2,684

Ability to serve 2,684 residents
across 36 communities



Residents

1,299 IN FEB 2023
2,684 IN JAN 2026



2,370

We employ
2,370 staff

85%

Revenue
Increase
Over 12
Months

ABOUT
INSPIRIT

INSPIRIT
LEADERSHIP

INSPIRIT BY
THE NUMBERS

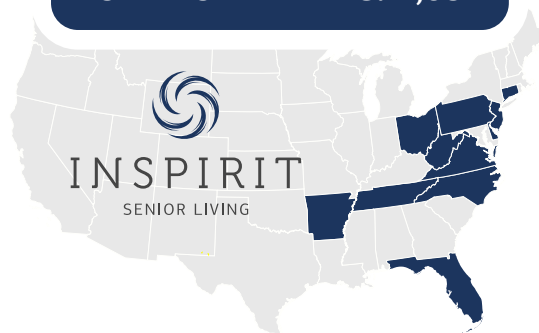
INSPIRIT
COMMUNITIES

OUR COMMUNITIES

Inspirit Senior Living operates 36 communities across 11 states.

COMMUNITY	UNIT CAPACITY
ARKANSAS	
South Wind Heights	116
CONNECTICUT	
Cedar Woods	92
DELAWARE	
Dover Place	71
Milford Place	71
TOTAL	142
FLORIDA	
The Reserve at Citrus	77
The Willows	124
TOTAL	201
NEW JERSEY	
Rose Hill	74
Terraces at Parke Place	74
Woodview Estates	70
TOTAL	218
NORTH CAROLINA	
Gardens at Wakefield	121
Creekside Terrace	117
TOTAL	238
OHIO	
The Gardens at Cuyahoga Falls	130
The Gardens at Liberty Park	118
TOTAL	248
PENNSYLVANIA	
The Palmerton	54
The Willow	57
Amity Place	70
Leighton Place	52
Maidencreek Place	56
Willowbrook Place	52
Wyncote Place	46
TOTAL	387

TOTAL OPERATING: 2,684



COMMUNITY	UNIT CAPACITY
TENNESSEE	
Emory Ridge	40
Foxbridge	116
Rain Forest Landings	62
The Rutherford Assisted Living	68
The Rutherford Memory Care	26
Vantage Pointe Village	80
Windlands South	192
Windsor Ridge	62
TOTAL	646
VIRGINIA	
Auburn Hill	92
The Warren	30
The Maynard	36
Hilltop	73
TOTAL	231
WEST VIRGINIA	
Kanawha Place	55
Oak Hill Place	49
Rolling Meadows Place	55
Seasons Place	55
TOTAL	214

ABOUT
INSPIRIT

INSPIRIT
LEADERSHIP

INSPIRIT BY
THE NUMBERS

INSPIRIT
COMMUNITIES

OUR COMMUNITIES

"Inspirit delivers the best in senior living in every campus. Our graduated care model ensures that every Inspirit resident receives the level of service tailored to his or her individual needs. From independent living, to Assisted Living, to Memory Care, Inspirit communities provide expert, compassionate care, in beautiful environments designed for living life to the fullest."

- DAVE MCHARG

ABOUT
INSPIRIT

INSPIRIT
LEADERSHIP

INSPIRIT BY
THE NUMBERS

INSPIRIT
COMMUNITIES



Enjoy an evening dining out with friends at Lazzari's Italian Restaurant or Freddy's Frozen Custard and Restaurant. Stock up on your favorite snacks and essentials at Sam's Club, Highland Walmart, and Kroger. Take a stroll in any of the nearby parks, including Craighead Forest Park and Allen Park, or watch a game at Southside Softball Complex and Park. For all your medical needs, you can quickly reach NEA Baptist Hospital and St. Bernard's Hospital. Come discover a fulfilling lifestyle in and around South Wind Heights, a welcoming independent senior living community.

SOUTH WIND HEIGHTS
2305 BERNARD ST, JONESBORO, AR 72401



OUR COMMUNITIES

"Inspirit delivers the best in senior living in every campus. Our graduated care model ensures that every Inspirit resident receives the level of service tailored to his or her individual needs. From independent living, to Assisted Living, to Memory Care, Inspirit communities provide expert, compassionate care, in beautiful environments designed for living life to the fullest."

- DAVE MCHARG

ABOUT
INSPIRIT

INSPIRIT
LEADERSHIP

INSPIRIT BY
THE NUMBERS

INSPIRIT
COMMUNITIES



AN INSPIRIT
SENIOR LIVING
COMMUNITY

Surrounded by lush landscapes and warm hospitality, Cedar Woods feels like home from the moment you arrive. From elegant common areas to thoughtfully designed apartments, every detail invites relaxation, connection, and independence with personalized support. In this close-knit community, enjoy all-inclusive amenities, services, and events that simplify retirement. Explore the historic districts at Canoe Brook Historic District and Stony Creek-Thimble Islands Historic District. Enjoy a tasty meal with friends at Branford Pizza and Archie Moore's Bar & Restaurant. Conveniently fill prescriptions at Walgreens Pharmacy or CVS Pharmacy, both nearby.

CEDAR WOODS
80 CEDAR ST, BRANFORD, CT 06405



OUR COMMUNITIES

"Inspirit delivers the best in senior living in every campus. Our graduated care model ensures that every Inspirit resident receives the level of service tailored to his or her individual needs. From independent living, to Assisted Living, to Memory Care, Inspirit communities provide expert, compassionate care, in beautiful environments designed for living life to the fullest."

- DAVE MCHARG

ABOUT
INSPIRIT

INSPIRIT
LEADERSHIP

INSPIRIT BY
THE NUMBERS

INSPIRIT
COMMUNITIES




DELAWARE COMMUNITIES




DOVER PLACE

AN INSPIRIT
SENIOR LIVING
COMMUNITY

The capital city of DE and gem of Kent County, Dover is home to Inspirit Senior Living's architectural gem for affordable assisted living and memory care residences. Our studio, one- or two-bedroom apartments are equipped with designer furnishings, kitchenettes, and large closets.

DOVER PLACE
1203 WALKER RD. DOVER, DE 19904



MILFORD PLACE

AN INSPIRIT
SENIOR LIVING
COMMUNITY

Milford Place is an affordable senior living community in Sussex County offering exceptional assisted living residences in a beautiful and peaceful setting. Residents can enjoy studio and one-bedroom and two bedroom apartments with social activities, and shaded outdoor space with, rocking chairs for groups and visitors. Personal, graduated care by our well-trained staff, including a 24-hour onsite nurse brings safety and security in a homelike atmosphere.

MILFORD PLACE
500 SOUTH DUPONT BOULEVARD MILFORD, DE 19963



OUR COMMUNITIES

"Inspirit delivers the best in senior living in every campus. Our graduated care model ensures that every Inspirit resident receives the level of service tailored to his or her individual needs. From independent living, to Assisted Living, to Memory Care, Inspirit communities provide expert, compassionate care, in beautiful environments designed for living life to the fullest."

- DAVE MCHARG

ABOUT
INSPIRIT

INSPIRIT
LEADERSHIP

INSPIRIT BY
THE NUMBERS

INSPIRIT
COMMUNITIES



Located in the greater Villages region, The Reserve at Citrus offers Assisted Living and Memory Care Residences over 4 peaceful acres in one of central Florida's premier retirement destinations. Minutes from numerous golf resorts, equestrian centers, outdoor and recreational venues, residents enjoy luxury living with a sense of community

THE RESERVE AT CITRUS
2341 WEST NORVELL BRYANT HWY, LECANTO, FL 34461



The Willows is situated on over 4 peaceful acres in the greater Villages region, one of the premier retirement destinations in central Florida's Sumter County. Only minutes away from numerous golf resorts, equestrian centers, rivers and other outdoor and recreational venues, residents of The Willows get the luxury of living a resort lifestyle with a sense community.

THE WILLOWS
4725 BELLWETHER LN, OXFORD, FL 34484



OUR COMMUNITIES

"Inspirit delivers the best in senior living in every campus. Our graduated care model ensures that every Inspirit resident receives the level of service tailored to his or her individual needs. From independent living, to Assisted Living, to Memory Care, Inspirit communities provide expert, compassionate care, in beautiful environments designed for living life to the fullest."

- DAVE MCHARG

ABOUT
INSPIRIT

INSPIRIT
LEADERSHIP

INSPIRIT BY
THE NUMBERS

INSPIRIT
COMMUNITIES



NEW JERSEY COMMUNITIES




ROSE HILL

AN INSPIRIT
SENIOR LIVING
COMMUNITY

Rose Hill has numerous common areas for residents and families to gather. There are multiple living rooms with fireplaces, a library, a sunroom, a bistro, an outdoor courtyard, as well as a beautiful outdoor patio. We welcome you with open arms. Contact us today to learn how we can help you and schedule a visit at Rose Hill.

ROSE HILL
1150 WASHINGTON BLVD., ROBBINSVILLE, NJ 08691

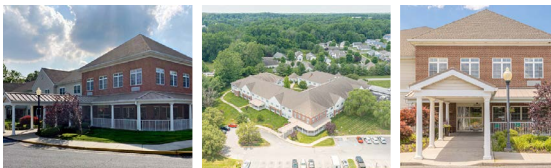



TERRACES AT PARKE PLACE

AN INSPIRIT
SENIOR LIVING
COMMUNITY

The Terraces at Parke Place assisted living facility in Sewell has numerous common areas for residents and families to gather. There are multiple living rooms with fireplaces, a library, a sunroom, a bistro, an outdoor courtyard, as well as a beautiful outdoor patio. We welcome you with open arms. Contact us today to learn how we can help you and schedule a visit at Terraces at Parke Place.

TERRACES AT PARKE PLACE
661 DELSEA DR. SEWELL, NJ 08080



OUR COMMUNITIES

"Inspirit delivers the best in senior living in every campus. Our graduated care model ensures that every Inspirit resident receives the level of service tailored to his or her individual needs. From independent living, to Assisted Living, to Memory Care, Inspirit communities provide expert, compassionate care, in beautiful environments designed for living life to the fullest."

- DAVE MCHARG

ABOUT
INSPIRIT

INSPIRIT
LEADERSHIP

INSPIRIT BY
THE NUMBERS

INSPIRIT
COMMUNITIES



When life becomes more difficult to handle independently, Woodview Estates Assisted Living facility in Mays Landing, NJ, is here for you. We provide all the comforts of home in an easily reachable location. As a family-owned community, we uphold a unique tradition of neighbors supporting one another. We deeply value our residents and take joy in assisting with everything, from the significant to the trivial, so you can live your life to the fullest.

WOODVIEW ESTATES
5030 UNAMI BLVD. MAYS LANDING, NJ 08330



OUR COMMUNITIES

"Inspirit delivers the best in senior living in every campus. Our graduated care model ensures that every Inspirit resident receives the level of service tailored to his or her individual needs. From independent living, to Assisted Living, to Memory Care, Inspirit communities provide expert, compassionate care, in beautiful environments designed for living life to the fullest."

- DAVE MCHARG

ABOUT
INSPIRIT

INSPIRIT
LEADERSHIP

INSPIRIT BY
THE NUMBERS

INSPIRIT
COMMUNITIES



NORTH CAROLINA COMMUNITIES

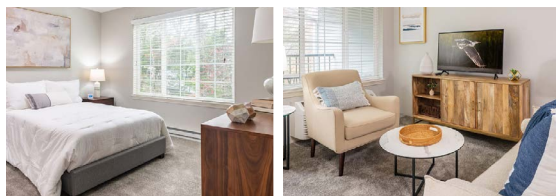


CREEKSIDE TERRACE

AN INSPIRIT
SENIOR LIVING
COMMUNITY

At Creekside Terrace, refined comfort meets vibrant senior living in the heart of Winston-Salem. Surrounded by lush landscapes and warm hospitality, our community is designed to feel like home from the moment you step inside. From elegant common areas to thoughtfully designed private apartments, every detail invites you to relax, connect, and embrace a lifestyle that blends independence with personalized support.

CREEKSIDE TERRACE
3895 OLD VINEYARD RD, WINSTON-SALEM, NC 27104

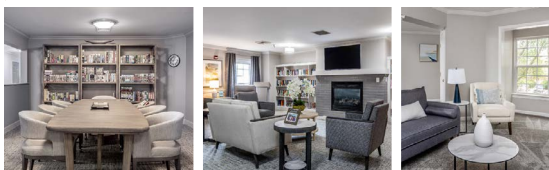


GARDENS AT WAKEFIELD

AN INSPIRIT
SENIOR LIVING
COMMUNITY

At Gardens at Wakefield, refined comfort meets vibrant senior living in the heart of Raleigh. Surrounded by lush landscapes and warm hospitality, our community is designed to feel like home from the moment you step inside. From elegant common areas to thoughtfully designed private apartments, every detail invites you to relax, connect, and embrace a lifestyle that blends independence with personalized support.

GARDENS AT WAKEFIELD
12800 SPRUCE TREE WAY, RALEIGH, NC 27614



OUR COMMUNITIES

"Inspirit delivers the best in senior living in every campus. Our graduated care model ensures that every Inspirit resident receives the level of service tailored to his or her individual needs. From independent living, to Assisted Living, to Memory Care, Inspirit communities provide expert, compassionate care, in beautiful environments designed for living life to the fullest."

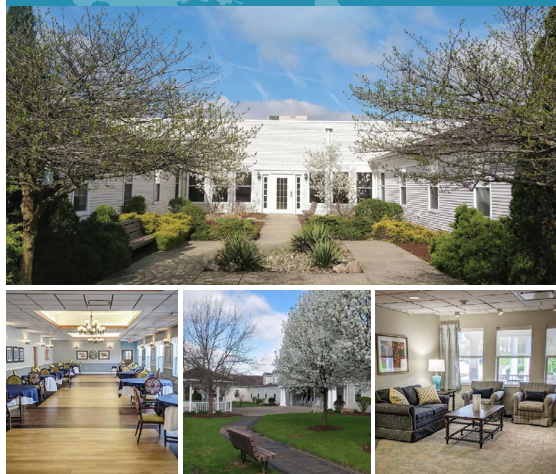
- DAVE MCHARG

ABOUT
INSPIRIT

INSPIRIT
LEADERSHIP

INSPIRIT BY
THE NUMBERS

INSPIRIT
COMMUNITIES



THE GARDENS AT LIBERTY PARK

AN INSPIRIT
SENIOR LIVING
COMMUNITY

The Gardens at Liberty Park offers Assisted Living and Memory Care Residences in beautiful surroundings, strategically positioned on over eight beautiful acres and conveniently located within 20 minutes of Akron and Cleveland.

THE GARDENS AT LIBERTY PARK
9975 GREENTREE PKWY, STREETSBORO, OH 44241

THE GARDENS AT CUYAHOGA FALLS

AN INSPIRIT
SENIOR LIVING
COMMUNITY

The Gardens at Cuyahoga Falls offers Assisted Living and Memory Care Residences in beautiful surroundings, strategically positioned on over eight beautiful acres and conveniently located within 20 minutes of Akron and Cleveland. Suites are fully carpeted, have spacious closets and private handicapped-accessible full baths ranging from approx. 190-329 sq feet.

THE GARDENS AT CUYAHOGA FALLS
45 CHART RD, CUYAHOGA FALLS, OH 44223



OUR COMMUNITIES

"Inspirit delivers the best in senior living in every campus. Our graduated care model ensures that every Inspirit resident receives the level of service tailored to his or her individual needs. From independent living, to Assisted Living, to Memory Care, Inspirit communities provide expert, compassionate care, in beautiful environments designed for living life to the fullest."

- DAVE MCHARG

ABOUT
INSPIRIT

INSPIRIT
LEADERSHIP

INSPIRIT BY
THE NUMBERS

INSPIRIT
COMMUNITIES



Located in the Lehigh Valley region of the state, this Allentown suburb is a small 57-unit community with a big heart. Just 20 minutes south of Allentown, The Willow is adjacent to Ancient Oaks and surrounded by greenery, golf courses and natural beauty. Offering Personal Care and temporary Respite Care, you'll have the right support that you're looking for from "a caring staff that works together as a unit" and only 5 miles from Lehigh Valley Health's flagship hospital at Lehigh Valley Hospital-Cedar Crest.

THE WILLOW
6488 ALBURTIS RD, MACUNGIE, PA 18062



OUR COMMUNITIES

"Inspirit delivers the best in senior living in every campus. Our graduated care model ensures that every Inspirit resident receives the level of service tailored to his or her individual needs. From independent living, to Assisted Living, to Memory Care, Inspirit communities provide expert, compassionate care, in beautiful environments designed for living life to the fullest."

- DAVE MCHARG

ABOUT
INSPIRIT

INSPIRIT
LEADERSHIP

INSPIRIT BY
THE NUMBERS

INSPIRIT
COMMUNITIES



PENNSYLVANIA COMMUNITIES (CONTINUED)



AMITY PLACE

AN INSPIRIT
SENIOR LIVING
COMMUNITY

Discover Amity Place, a tranquil senior living community nestled in Southern Berks County, offering charming studio and one-bedroom apartments complete with convenient kitchenettes. With a dedicated and compassionate staff, including a 24-hour on-site nurse, our personal, graduated care ensures your safety and comfort in a homelike atmosphere, among a close-knit community that quickly becomes family.

AMITY PLACE
139 OLD SWEDE RD, DOUGLASSVILLE, PA 19518



LEIGHTON PLACE

AN INSPIRIT
SENIOR LIVING
COMMUNITY

Situated on a tranquil hilltop in bustling Williamsport, freshly-renovated Leighton Place gives the feeling of home sweet home. Each senior apartment is designed for you to give your personal touch while our well-trained staff, including a 24-hour onsite nurse, treats you like family.

LEIGHTON PLACE
1251 RURAL AVE, WILLIAMSPORT, PA 17701



OUR COMMUNITIES

“Inspirit delivers the best in senior living in every campus. Our graduated care model ensures that every Inspirit resident receives the level of service tailored to his or her individual needs. From independent living, to Assisted Living, to Memory Care, Inspirit communities provide expert, compassionate care, in beautiful environments designed for living life to the fullest.”

- DAVE MCHARG

ABOUT
INSPIRIT

INSPIRIT
LEADERSHIP

INSPIRIT BY
THE NUMBERS

INSPIRIT
COMMUNITIES



PENNSYLVANIA COMMUNITIES (CONTINUED)



MAIDENCREEK
PLACE

AN INSPIRIT
SENIOR LIVING
COMMUNITY

Just 15 minutes north of downtown Reading, PA, Maiden Creek Place is beaming with life—Dine by the fireplace and lounge near the piano. Find your fit and be supported by our team of professionals that will become like family. Get inspired with recently renovated, private apartments to design your way while we provide housekeeping, laundry, and room service dining or restaurant-style meals, plus plenty of activities to keep you smiling.

MAIDENCREEK PLACE
105 DRIES RD, READING, PA 19605

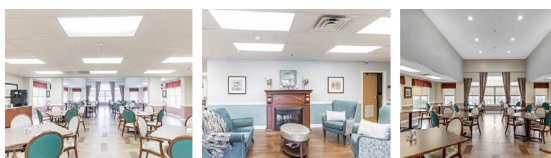


THE PALMERTON

AN INSPIRIT
SENIOR LIVING
COMMUNITY

The Palmerton in Northeastern PA is convenient to vibrant Northampton County. It is located less than a mile from downtown Palmerton and just 20 minutes from Allentown, yet surrounded by green at the base of Blue Mountain. This 54-unit community offers Personal Care and Memory Care in its spacious, stylish apartments. You can choose from a list of engaging activities, specialty dining or enjoy comfortable respite in your room with room service. 24-hr onsite nursing care is available and a well-trained staff treats you like family.

THE PALMERTON
71 PRINCETON AVE., PALMERTON, PA 18071



OUR COMMUNITIES

"Inspirit delivers the best in senior living in every campus. Our graduated care model ensures that every Inspirit resident receives the level of service tailored to his or her individual needs. From independent living, to Assisted Living, to Memory Care, Inspirit communities provide expert, compassionate care, in beautiful environments designed for living life to the fullest."

- DAVE MCHARG

ABOUT
INSPIRIT

INSPIRIT
LEADERSHIP

INSPIRIT BY
THE NUMBERS

INSPIRIT
COMMUNITIES



PENNSYLVANIA COMMUNITIES (CONTINUED)

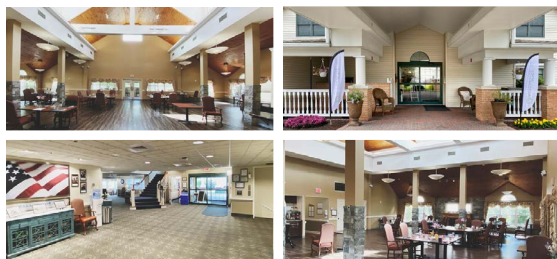


WILLOWBROOK
PLACE

AN INSPIRIT
SENIOR LIVING
COMMUNITY

Situated among restaurants, parks, shopping and 30 minutes north of Wilkes-Barre, PA, Willowbrook Place gives you full access to the spirited life of Clarks Summit. Plenty of amenities and community events planned with you in mind, plus renovated studio and one-bedroom apartments we invite you to personalize. Our hardworking, compassionate staff assigns an individual care plan based on your precise physical and cognitive needs to support you.

WILLOWBROOK PLACE
150 EDELLA ROAD CLARKS SUMMIT, PA 18411

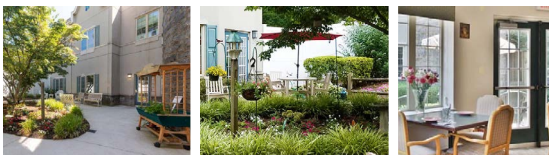


WYNCOTE PLACE
MEMORY CARE

AN INSPIRIT
SENIOR LIVING
COMMUNITY

Memory Care at its finest just 11 miles from Center City, Philadelphia. Wyncote Place is home to a professional staff dedicated to safety, respect and the most heartwarming group you'll meet. Surrounded by so many green spaces, such as Curtis Arboretum, there's plenty of chances to experience the area with the security and comfort of Inspirit's own transportation, expert guides and trained staff who encourage sharing memories of a life well lived, as well as support to live well now.

WYNCOTE PLACE
240 BARKER ROAD WYNCOTE, PA 19095



OUR COMMUNITIES

"Inspirit delivers the best in senior living in every campus. Our graduated care model ensures that every Inspirit resident receives the level of service tailored to his or her individual needs. From independent living, to Assisted Living, to Memory Care, Inspirit communities provide expert, compassionate care, in beautiful environments designed for living life to the fullest."

- DAVE MCHARG

ABOUT
INSPIRIT

INSPIRIT
LEADERSHIP

INSPIRIT BY
THE NUMBERS

INSPIRIT
COMMUNITIES



RAIN FOREST
LANDINGS

AN INSPIRIT
SENIOR LIVING
COMMUNITY

Situated in the Great Appalachian Valley, Rain Forest Landings is just off Kingston Pike in West Knoxville. It is convenient to the neighborhoods of Cedar Springs, Rocky Hill, West Hills, and Cedar Bluff. Just an 11-minute drive from Parkwest Medical Center, this 62-unit community offers Assisted Living and Memory Care, as well as engaging activities, specialty dining and physical therapy by a well-trained staff that treats you like family.

RAINFORREST LANDINGS

555 RAIN FOREST ROAD, KNOXVILLE, TN 37923



OUR COMMUNITIES

"Inspirit delivers the best in senior living in every campus. Our graduated care model ensures that every Inspirit resident receives the level of service tailored to his or her individual needs. From independent living, to Assisted Living, to Memory Care, Inspirit communities provide expert, compassionate care, in beautiful environments designed for living life to the fullest."

- DAVE MCHARG

ABOUT
INSPIRIT

INSPIRIT
LEADERSHIP

INSPIRIT BY
THE NUMBERS

INSPIRIT
COMMUNITIES

TENNESSEE COMMUNITIES (CONTINUED)



EMORY RIDGE AN INSPIRIT SENIOR LIVING COMMUNITY

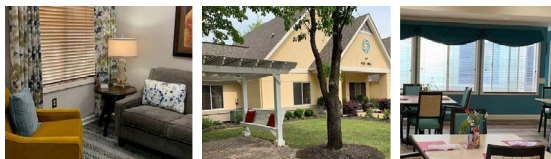
Emory Ridge, one of Inspirit's dedicated Memory Care facilities, is 10 minutes North of Old City Knoxville and conveniently adjacent to North Knoxville Medical Center. The campus is situated on almost three acres in a suburb with a small-town feel. This 40-unit secured community specializes in support for those with Alzheimer's or other forms of dementia and offers private, semi-private and deluxe suite apartments tailored to seniors needing a sense of familiarity and routine.

EMORY RIDGE
7545 THUNDER LANE, POWELL, TN 37849

FOXBRIDGE AN INSPIRIT SENIOR LIVING COMMUNITY

Foxbridge is the only senior living community in the Bartlett, TN area to have a Snoezelen Room, an innovative technology suited well for residents with cognitive, sensory, and physical challenges. The gated campus is set on 8 acres in a peaceful park setting with charming senior cottages, as well as a stocked fishing pond. It is conveniently located in Shelby County, just 15 miles from downtown Memphis and less than 6 miles from two major medical centers.

FOXBRIDGE
2180 MANGUM ROAD, BARTLETT, TN 38134



OUR COMMUNITIES

"Inspirit delivers the best in senior living in every campus. Our graduated care model ensures that every Inspirit resident receives the level of service tailored to his or her individual needs. From independent living, to Assisted Living, to Memory Care, Inspirit communities provide expert, compassionate care, in beautiful environments designed for living life to the fullest."

- DAVE MCHARG

ABOUT
INSPIRIT

INSPIRIT
LEADERSHIP

INSPIRIT BY
THE NUMBERS

INSPIRIT
COMMUNITIES

TENNESSEE COMMUNITIES (CONTINUED)



THE RUTHERFORD ASSISTED LIVING

AN INSPIRIT
SENIOR LIVING
COMMUNITY

Located 45 minutes south of Nashville in the Central Basin of Tennessee, The Rutherford specializes in Assisted Living for those that want to live life with spirit. Just an 11-minute drive from Ascension St. Thomas, this 68-unit community offers stylish studio, one-, and two-bedroom apartments. Some of the residence features include a sophisticated grand living room, landscaped grounds with gazebo and specialty dining on a sunlit patio. Engage in always-new activities that keep each day enriching.

RUTHERFORD ASSISTED LIVING
1658 LASCASSAS PK., MURFREESBORO, TN 37130

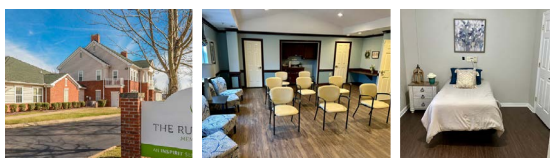


THE RUTHERFORD MEMORY CARE

AN INSPIRIT
SENIOR LIVING
COMMUNITY

The Rutherford specializes in support for those with Alzheimer's or other forms of dementia. Inspirit's dedicated Memory Care facility is just an 11-minute drive from Ascension St. Thomas Rutherford Hospital and 45 minutes south of metropolitan Nashville. This 26-unit secured community offers private and semi-private suite apartments tailored to seniors needing a sense of familiarity and routine. Plenty of safe, engaging activities are offered to care for the body, mind, and spirit.

RUTHERFORD MEMORY CARE
2045 GOLD VALLEY DR., MURFREESBORO, TN 37130



OUR COMMUNITIES

"Inspirit delivers the best in senior living in every campus. Our graduated care model ensures that every Inspirit resident receives the level of service tailored to his or her individual needs. From independent living, to Assisted Living, to Memory Care, Inspirit communities provide expert, compassionate care, in beautiful environments designed for living life to the fullest."

- DAVE MCHARG

ABOUT
INSPIRIT

INSPIRIT
LEADERSHIP

INSPIRIT BY
THE NUMBERS

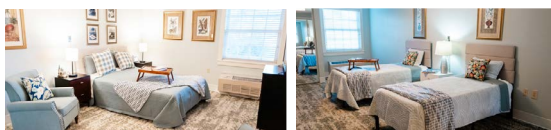
INSPIRIT
COMMUNITIES

TENNESSEE COMMUNITIES (CONTINUED)

WINDSOR RIDGE | AN INSPIRIT SENIOR LIVING COMMUNITY

Offering Assisted Living and Memory Care living options, Windsor Ridge, serves many North Knoxville neighborhoods including Powell, Whittle Springs, Fountain City, Lincoln Park, West Haven and Windsor Park. Large private apartments are offered with kitchenettes, comfortable sitting areas and plenty of space to design your way. Charming sunrooms, landscaped patios and contemporary common areas welcome seniors with all levels of mobility. 24-hr onsite nursing care is available and a well-trained staff treats you like family.

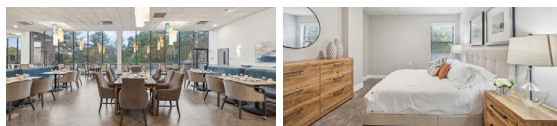
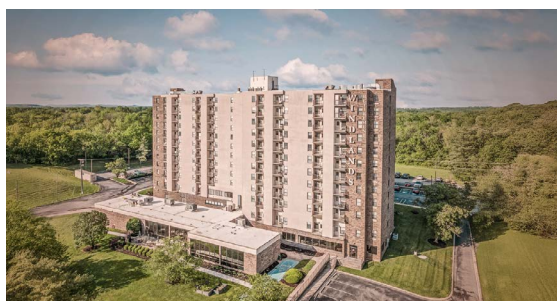
WINDSOR RIDGE
5611 CENTRAL AVENUE PIKE, KNOXVILLE, TN 37912



WINDLANDS SOUTH | AN INSPIRIT SENIOR LIVING COMMUNITY

At Windlands South, refined comfort meets vibrant senior living in the heart of Nashville. Surrounded by lush landscapes and warm hospitality, our community is designed to feel like home from the moment you step inside. From elegant common areas to thoughtfully designed private apartments, every detail invites you to relax, connect, and embrace a lifestyle that blends independence with personalized support.

WINDLANDS SOUTH
3800 SAM BONEY DR, NASHVILLE, TN 37211



OUR COMMUNITIES

“Inspirit delivers the best in senior living in every campus. Our graduated care model ensures that every Inspirit resident receives the level of service tailored to his or her individual needs. From independent living, to Assisted Living, to Memory Care, Inspirit communities provide expert, compassionate care, in beautiful environments designed for living life to the fullest.”

- DAVE MCHARG

ABOUT
INSPIRIT

INSPIRIT
LEADERSHIP

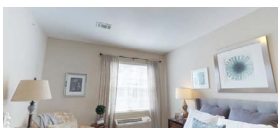
TENNESSEE COMMUNITIES (CONTINUED)



AN INSPIRIT
SENIOR LIVING
COMMUNITY

Vantage Pointe Village offers small-town charm and hospitality. Our community is set along the Cumberland River with nearby boutique stores, local restaurants, and more. We are also close to Highway 12, with many parks and scenic outdoor recreation venues nearby.

VANTAGE POINTE VILLAGE
2035 VANTAGE POINTE RD, ASHLAND CITY, TN 37015



INSPIRIT BY
THE NUMBERS

INSPIRIT
COMMUNITIES



OUR COMMUNITIES

"Inspirit delivers the best in senior living in every campus. Our graduated care model ensures that every Inspirit resident receives the level of service tailored to his or her individual needs. From independent living, to Assisted Living, to Memory Care, Inspirit communities provide expert, compassionate care, in beautiful environments designed for living life to the fullest."

- DAVE MCHARG

ABOUT
INSPIRIT

INSPIRIT
LEADERSHIP

INSPIRIT BY
THE NUMBERS

INSPIRIT
COMMUNITIES



Set against the serenity and stunning views of the Swift Creek Reservoir, Auburn Hill offers you a welcoming and comfortable environment where you can easily adapt, thrive and enjoy life—just like at home. Auburn Hill is Richmond's only lakefront senior living community. Auburn Hill apartments can be furnished to unique tastes and preferences, include kitchenettes with refrigerators, spacious bathrooms, and including telephone, internet, and cable access, as well as an emergency response system.

AUBURN HILL
5800 HARBOUR LANE, MIDLOTHIAN, VA 23112



OUR COMMUNITIES

"Inspirit delivers the best in senior living in every campus. Our graduated care model ensures that every Inspirit resident receives the level of service tailored to his or her individual needs. From independent living, to Assisted Living, to Memory Care, Inspirit communities provide expert, compassionate care, in beautiful environments designed for living life to the fullest."

- DAVE MCHARG

ABOUT
INSPIRIT

INSPIRIT
LEADERSHIP

INSPIRIT BY
THE NUMBERS

INSPIRIT
COMMUNITIES



VIRGINIA COMMUNITIES (CONTINUED)



HILLTOP

AN INSPIRIT
SENIOR LIVING
COMMUNITY

Hilltop is surrounded by stunning nature and just a 12-minute drive from Old Town Winchester in beautiful Eastern Virginia. Offering a variety of living options among 73 individual units, this newly-renovated Inspirit community shines with its sophisticated decor, high ceilings and a grand piano. The staff truly inspires a sense of community and fosters companionship through art activities, group outings, musical performances, and seasonal celebrations. Feel at ease knowing Valley Health Medical Center is about 4 miles away.

HILLTOP
111 DENNY LANE, WINCHESTER, VA 22603



OUR COMMUNITIES

"Inspirit delivers the best in senior living in every campus. Our graduated care model ensures that every Inspirit resident receives the level of service tailored to his or her individual needs. From independent living, to Assisted Living, to Memory Care, Inspirit communities provide expert, compassionate care, in beautiful environments designed for living life to the fullest."

- DAVE MCHARG

ABOUT
INSPIRIT

INSPIRIT
LEADERSHIP

INSPIRIT BY
THE NUMBERS

INSPIRIT
COMMUNITIES



VIRGINIA COMMUNITIES (CONTINUED)



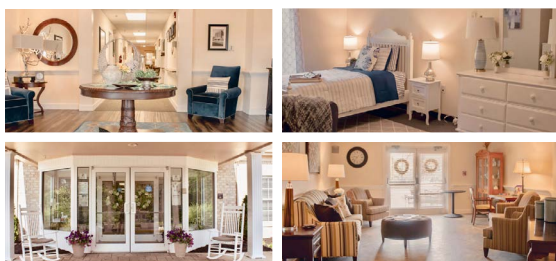
THE MAYNARD

AN INSPIRIT
SENIOR LIVING
COMMUNITY

An affordable senior living community nestled in the rolling hills of Virginia's Shenandoah Valley, Inspirit's jewel of Strasburg provides assisted living apartments with quality care in a welcoming, homelike atmosphere. Historic civil war sites, magnificent naturally-occurring river bends, and lush greenery surround this well-designed retirement facility 2 miles from Valley Health Shenandoah Memorial Hospital Family Medicine.

THE MAYNARD

14 MAYNARD LN, STRASBURG, VA 22657



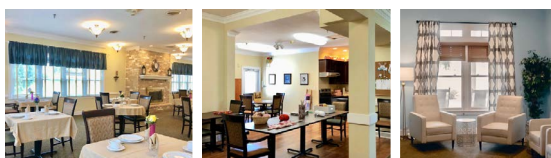
THE WARREN

AN INSPIRIT
SENIOR LIVING
COMMUNITY

An affordable senior living community nestled in the heart of Virginia's Shenandoah Valley. Our community offers assisted living and memory care apartments, providing residents with the highest quality of care and a welcoming, homelike atmosphere, including social activities, shaded outdoor space, and rocking chairs for groups and visitors. Historic sites, National Parks, and greenery surround this Inspirit gem in Virginia's countryside, conveniently 1 miles from Valley Health Shenandoah Memorial Hospital.

THE WARREN

935 S OX RD, WOODSTOCK, VA 22664



OUR COMMUNITIES

"Inspirit delivers the best in senior living in every campus. Our graduated care model ensures that every Inspirit resident receives the level of service tailored to his or her individual needs. From independent living, to Assisted Living, to Memory Care, Inspirit communities provide expert, compassionate care, in beautiful environments designed for living life to the fullest."

- DAVE MCHARG

ABOUT
INSPIRIT

INSPIRIT
LEADERSHIP

INSPIRIT BY
THE NUMBERS

INSPIRIT
COMMUNITIES



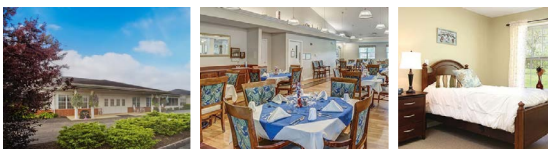
Kanawha Place in Charleston, West Virginia offers small town charm with big city renovations. With exceptional assisted living, respite care, and short-term care services, this community prioritizes comfort and care while enriching your spirit with a host of volunteers, entertainment and 24/7 onsite medical help. Family-like support and encouragement is the norm with just 55 residents making each interaction personal.

KANAWHA PLACE
699 S PARK RD, CHARLESTON, WV 25304



With a family-like setting of just 49 residents, this Fayette County residence shines with an updated dining room and well-equipped studio and one-bedroom apartments, all with kitchenettes, large closets and big windows. Picture-worthy landscape of the New River Gorge surrounds this Inspirit gem, yet is centrally located North of the Beckley Metro Area and 2 miles away from Plateau Medical Center.

OAK HILL PLACE
438 23RD STREET OAK HILL, WV 25901



OUR COMMUNITIES

"Inspirit delivers the best in senior living in every campus. Our graduated care model ensures that every Inspirit resident receives the level of service tailored to his or her individual needs. From independent living, to Assisted Living, to Memory Care, Inspirit communities provide expert, compassionate care, in beautiful environments designed for living life to the fullest."

- DAVE MCHARG

ABOUT
INSPIRIT

INSPIRIT
LEADERSHIP

INSPIRIT BY
THE NUMBERS

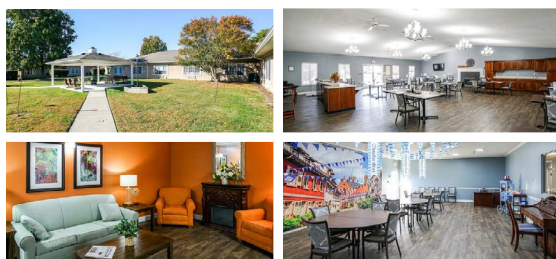
INSPIRIT
COMMUNITIES

WEST VIRGINIA COMMUNITIES (CONTINUED)



Affordable Independent and Assisted Living residences in the Tri-State region offering studio and one-bedroom apartments with impeccable, designer furnishings and engaging social activities where you'll soon become like family. Historic sites, lush greenery with private transportation to take it all in makes community senior living the best part of your life yet. Three miles from Teays Valley Hospital and a 24-hour onsite nurse brings safety and security for seniors of all levels of independence.

ROLLING MEADOWS PLACE
5 ROLLING MEADOWS DRIVE SCOTT DEPOT, WV 25560



Amidst the lush green scenery of Greenbrier County is Seasons Place, an affordable senior living community offering exceptional Independent and Assisted living residences. Residents can enjoy studio and one-bedroom apartments, a beauty salon that makes you feel like a star and social activities that celebrate real connections. Graduated care that is truly tailored to your needs, you'll have security of a 24-hour onsite nurse and comfort of a homelike atmosphere with a group you'll soon call family.

SEASONS PLACE
177 HOLT LN, LEWISBURG, WV 24901

